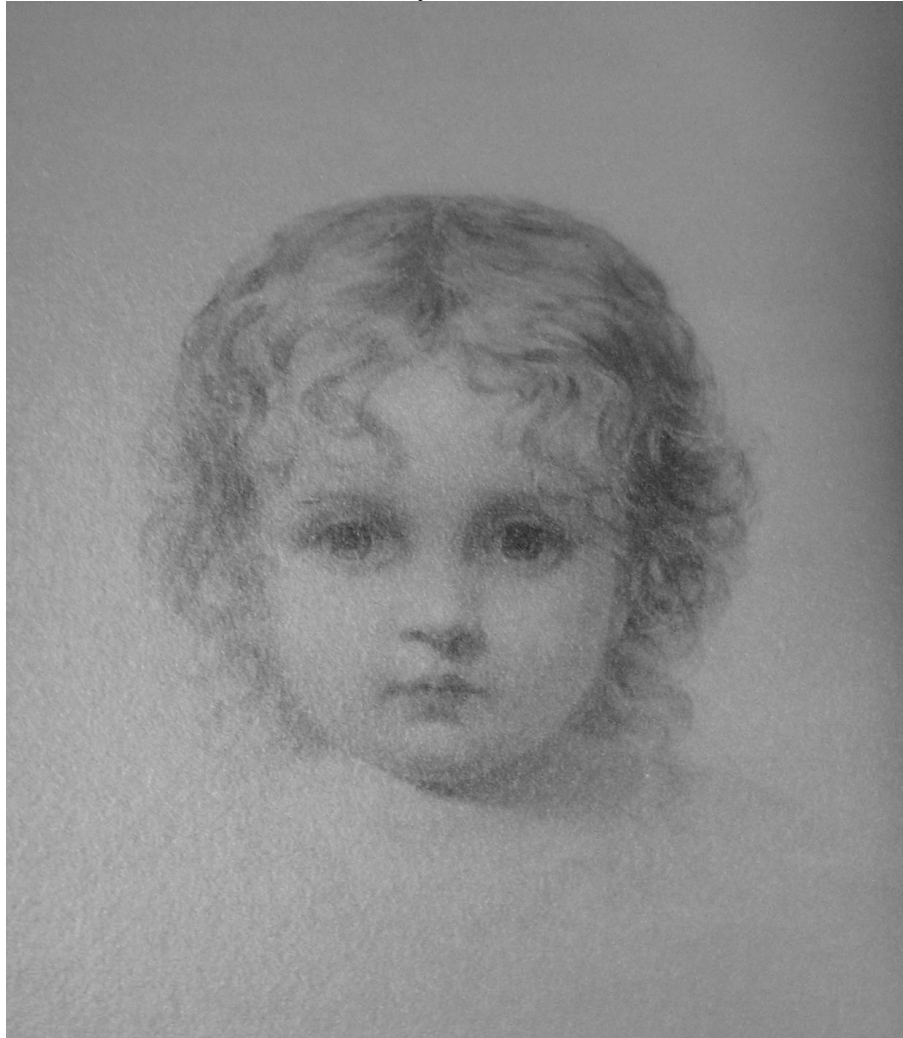


The Manchester Historical Society
Cheney Homestead



Rosalie Goodman at two years old.

Drawing by her uncle, Seth Wells Cheney, who grew up in the Cheney Homestead.
Excerpt from "Memoir of Seth W. Cheney," by Seth's widow, author Ednah Dow Littlehale Cheney:

ter into her face." Equally beautiful are his portraits of children ; perhaps the rarest of all the Rosalie, his beautiful niece of two years old. More than one has said that among all the beautiful babes in the galleries of Europe there is none *like* this ; as another artist said, "This is American, it is intellectual innocence." Every mother's heart is touched as she looks on it, and thinks it is like the child who is an angel in heaven. Gould says, "I have searched and missed in all the galleries of Europe a face of more ethereal beauty than Seth's Rosalie." The only sitters

Rosalie Goodman (1848-1925) was one of three children of Electa W. Cheney Goodman (1821-1903) and Richard Goodman (1818-1896) of Massachusetts. Electa and the artist Seth Wells (1810-1856) were siblings, in the generation of Cheney brothers who founded the famous silk mills in Manchester, CT.

Additional information about Seth and his brother John, also an artist, available on our website www.manchesterhistory.org. Use the search box on the home page. Notes by webmaster Susan Barlow 1/4/2017.